

This tutorial will teach you how to change the resolution of your display settings to allow for the optimal viewing area on your screen for the GenaRes training videos.

First go to your start menu and select “Control Panel” (Fig 1.1)

A new window will pop up with several options for you to choose from.

Based on your personal settings this window may have one of two different appearances.



Fig 1.1

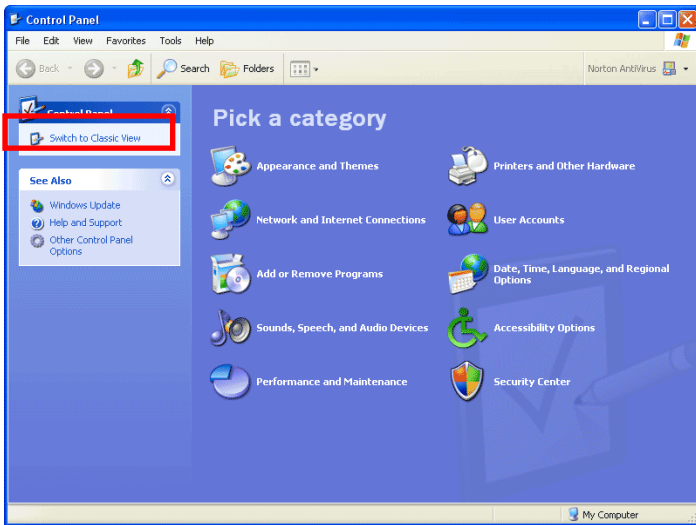


Fig 1.2

If your Control Panel window looks like this (Fig 1.2) please select the “Switch to classic view” option found on the left side of the window.

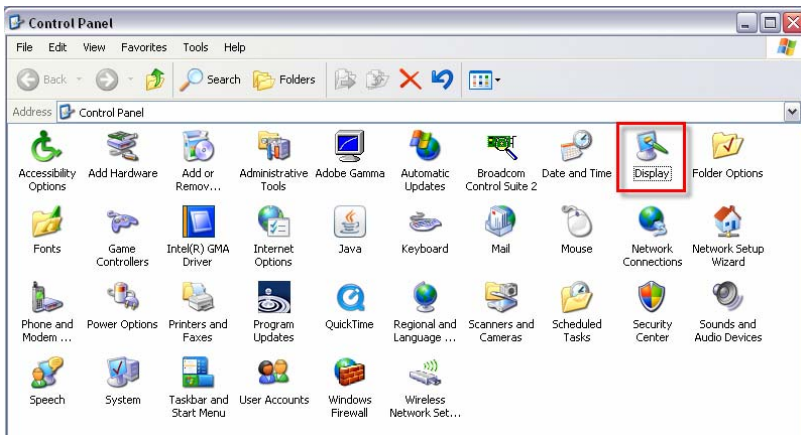


Fig 1.3

Once you select the classic view your window should look similar to the window shown below. (Fig 1.3) From the control panel window we are going to select the “Display” icon. Double-click the icon to open the “Display Properties” window.

In the “Display Properties” (Fig 1.4) window there are several tabs that run along the top of the window. Select the “Settings” tab, and on the left side of the window you will notice an area that says “Screen Resolution.” Drag the sliding bar until the numbers along the bottom display “1024x768.” (You may set your resolution higher if you choose. 1024x768 is the minimum your resolution should be set at to get the best display of the GenaRes Training Videos. Upon selecting your new resolution press the “Apply” button and your new resolution settings should be applied. A dialogue box may appear asking if you wish to keep the settings. Simply click “Yes” and then click “Ok” on the display properties window to complete the change.

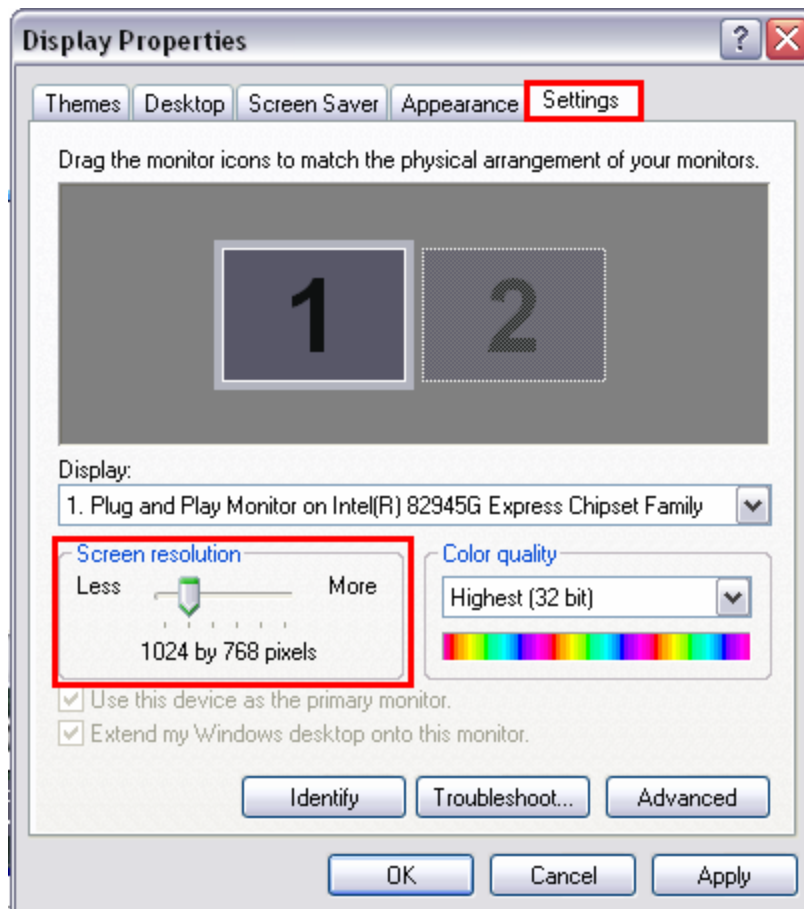


Fig 1.4